

EASTBANK

Tamsin Ace
Director of East Bank
t.ace@fashion.arts.ac.uk



A wide-angle photograph of the Eastbank development in Manchester, UK. The image shows a modern architectural complex with multiple buildings. On the left, a tall, light-colored building with a grid-like facade features the 'uap' logo. To its right is a building with a 'BBC' sign. Further right is a large, multi-story brick building with 'Sadler's Wells' written on its upper facade. In the foreground, a canal flows from left to right, with several swan-shaped boats moored along the bank. A bridge is visible in the distance on the left. A construction crane is visible in the background behind the buildings. The sky is blue with some light clouds. The overall scene depicts a vibrant urban waterfront area.

EASTBANK

**A powerhouse for
innovation, creativity and
learning**

EAST BANK TIMELINE



LONDON COLLEGE OF FASHION, UAL & UCL EAST

These world-leading universities both opened their doors to students in Autumn 2023.



SADLER'S WELLS EAST

The opening performance of 'Our Mighty Groove' premieres on 6 February 2025 followed by a full season of performances.



V&A EAST STOREHOUSE

The first V&A East venue is open to the public from May 2025 for a behind-the-scenes look at the V&A stores.



DAVID BOWIE CENTRE

The David Bowie Centre opens at V&A East Storehouse in September 2025.



V&A EAST MUSEUM

Opening in Spring 2026.



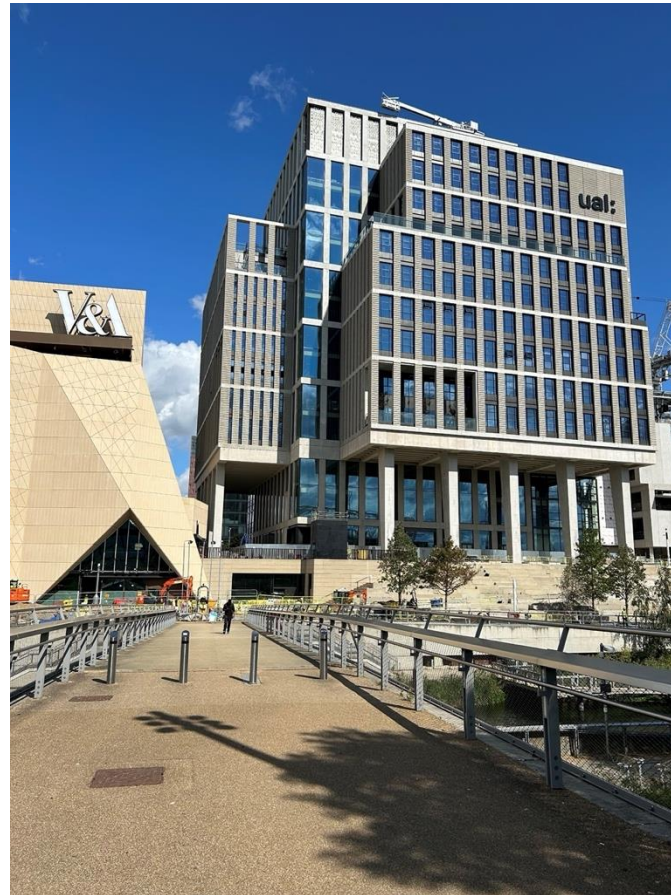
BBC STUDIOS

Opening in late 2026 / early 2027.

UCL EAST



LONDON COLLEGE OF FASHION, UAL



SADLER'S WELLS EAST



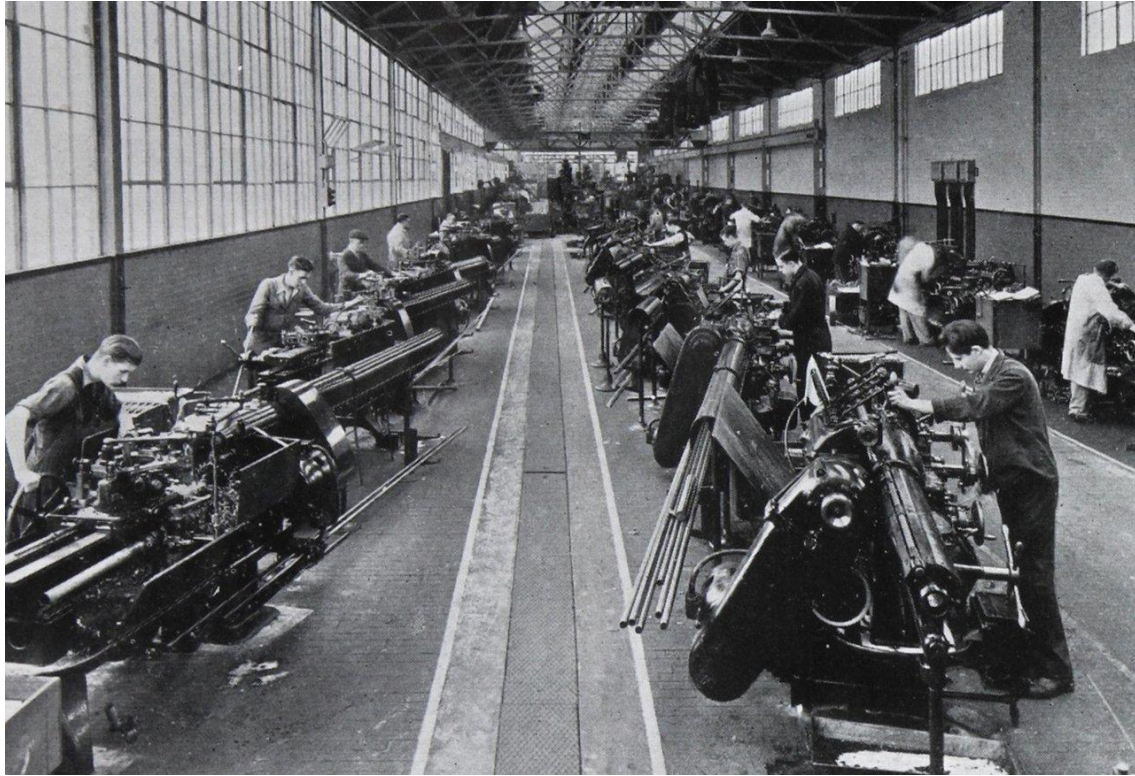
V&A EAST



BBC STUDIOS



CONNECTION WITH LOCAL HISTORY



QUEEN ELIZABETH OLYMPIC PARK

2008



2024



EAST BANK OBJECTIVES

1

STRATFORD is the
new destination
and economic
engine for London

2

LOCAL ASPIRATIONS
have been raised and
perceptions of east
London have improved

3

**ACCESS TO SPORT,
CULTURE AND CIVIC**
opportunities have
been created for locals,
national and
international visitors

4

**EDUCATION AND
SKILLS** of local people
have been enhanced

5

SUSTAINABLE JOBS
have been created and
local people have been
supported to access
jobs elsewhere

6

**NEW MODELS OF
PRACTICE** in creativity,
innovation and ground-
breaking research have
been produced

7

**ECONOMIC
GROWTH** has been
boosted nationally



OUR COMMUNITY



The Great Get Together 2024



East Summer School 2024

THE FUTURE



Conservation studios at V&A East Storehouse © Victoria and Albert Museum, London



Sam White, 'Kano and Ghetto, i-D Live, Cargo, March 2005' © Sam White



Mythili Prakash - She's Auspicious (c) Maxime Dos

EAST BANK

Tamsin Ace
Director of East Bank
t.ace@fashion.arts.ac.uk



EASTBANK

MAYOR OF LONDON



ual: london college
of fashion

